

## Applications:

Suitable for measuring gaseous media, used to measure natural gas pressure as well air flow indication and leak detection, vacuum pumps, air compressors, air filters, gas burners, vacuum ovens, suction regulators and respirators.

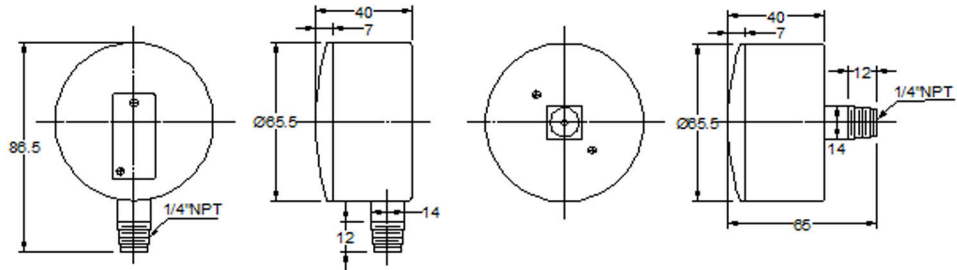


## Specifications:

■ Dial	2.5"(63mm),4"(100mm)
■ Case	Black Paintied Steel / st/st
■ Lens	PC / Glass
■ Ring	Steel
■ Internal	Brass / Stainless Steel
■ Diaphragm Element:	Stainless steel or Phosphor bronze
■ Connection	1/4" NPT
■ Range	0-15" Water Vac -- 0-10 PSI/KPA
■ Accuracy	±3-2-3%,±1.0%

# Low Pressure Gauge

Low Pressure Gauge  
 Dial: Aluminum with zero adjustable screw  
 Case: Chrome plated steel, Black steel, SS case  
 Connection: 1/8" or 1/4" NPT, Bottom or Back  
 Connection Material: Brass or SS  
 Capsule: Brass or SS  
 Range: 0-15" water Vac, 0-10 PSI/KPA  
 Accuracy:  $\pm 2\%$



Case Material: AISI 304 Stainless Steel  
 Lens Material: Polycarbonate  
 Ring: 304 Stainless Steel, Bayonet Mount  
 Socket: AISI 304 Stainless Steel or Brass  
 Capsule: SS or Brass  
 Ambient Temperature Limits: -14°F to 158°F (-25°C to 70°C)  
 Process Temperature Limits: -14°F to 158°F (-25°C to 70°C)  
 Enclosure Rating: IP68

