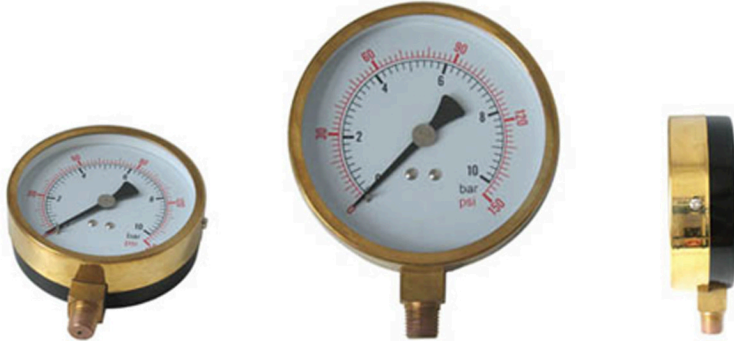


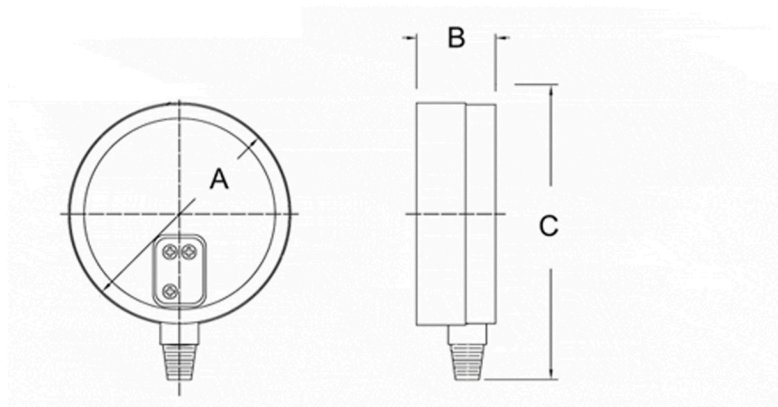
## Applications:

Used in Plumbing and heating



## Specifications:

■ Dial	3.5"(90mm),4.5"(115mm),6"(150mm)
■ Case	Black Plated Steel/Black Plated Alu.
■ Lens	Glass
■ Ring	Brass or stainless steel
■ Internal	Brass or stainless steel
■ Connection	Brass or stainless steel, 1/2" or 1/4" NPT
■ Range	30"Hg.Vac./kpa -- 0-5000 Psi/Kpa
■ Accuracy	±1% or ±0.8%



Dial	A	B	C
3.5" (90mm)	3.935" (99.9mm)	1.441" (36.6mm)	4.9025" (124.45mm)
4.5" (115mm)	4.920" (124.968mm)	2.575" (65.405mm)	per request
6" (150mm)	6.300" (160.02mm)	2.000" (50.8mm)	per request