

Applications:

A general-purpose gauge that is pulsation resistant. Used in compressors, filters, regulators, water pumps, paint sprayers and a variety of other rapid pressure fluctuation applications.

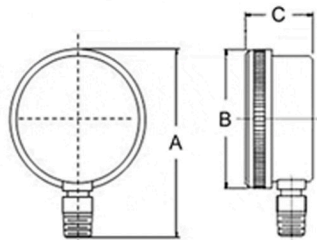


Specifications:

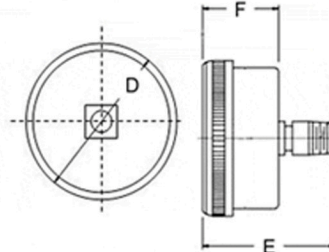
■ Dial	1.5"(40mm),2"(50mm),2.5"(63mm),3.5"(90mm)
■ Case	Black Plated Steel
■ Lens	Acrylic,screw on len
■ Movement	Brass,lutterless and zero adjustable
■ Internal	Brass
■ Connection	Brass,1/8" or 1/4" NPT.Bottom/Back Connection,U-clamp available
■ Range	30"Hg.Vac./kpa -- 0-5000 Psi/Kpa
■ Accuracy	±2-1-2%

1-1 Flutterless Movement Gauge

Bottom Connection

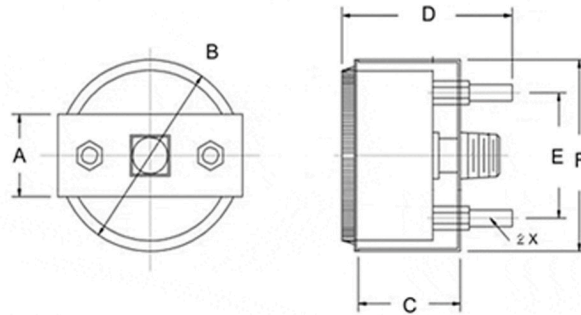


Back Connection



1-2 Flutterless Movement Gauge with U-Clamp

Back Connection, U-Clamp



1-1 Flutterless Movement Gauge

Dial	A	B	C	D	E	F
1.5" (40mm)	2.638" (66.8mm)	1.831" (46.4mm)	1.142" (29.0mm)	1.831" (46.4mm)	1.890" (47.9mm)	1.102" (27.9mm)
2" (50mm)	3.150" (80mm)	2.343" (59.4mm)	1.181" (30mm)	2.343" (59.4mm)	2.067" (52.46mm)	1.181" (30mm)
2.5" (63mm)	3.740" (94.9mm)	2.854" (72.33mm)	1.370" (34.7mm)	2.835" (72.0mm)	2.165" (55mm)	1.378" (35mm)
3.5" (90mm)	4.843" (122.9mm)	3.819" (96.9mm)	1.323" (33.5mm)	3.819" (96.9mm)	2.087" (52.9mm)	1.323" (33.5mm)

1-2 Flutterless Movement Gauge With U-clamp

Dial	A	B	C	D	E	F
1.5" (40mm)	0.748" (19.0mm)	1.850" (46.9mm)	0.984" (24.9mm)	1.377" (34.8mm)	1.102" (27.9mm)	1.889" (47.7mm)
2" (50mm)	0.984" (25.0mm)	2.283" (57.90mm)	1.259" (32.0mm)	2.105" (53.5mm)	1.469" (38.0mm)	2.283" (57.9mm)
2.5" (63mm)	0.984" (24.9mm)	2.834" (71.90mm)	1.377" (34.9mm)	2.184" (55.5mm)	1.968" (21mm)	2.834" (71.9mm)
3.5" (90mm)	1.000" (25.4mm)	3.976" (100.9mm)	1.272" (32.3mm)	2.185" (55.5mm)	2.953" (74.9mm)	3.898" (98.9mm)