

Applications:

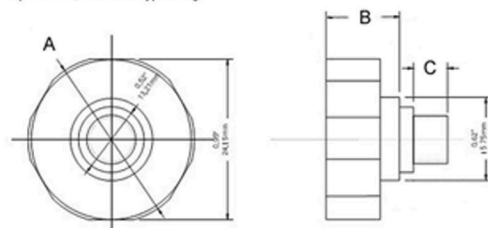
Commonly used on portable pneumatic equipment such as compressors, hand-held sprayers, pressurized recreational guns, oxygen tanks and regulators, pumps and fire extinguishers.



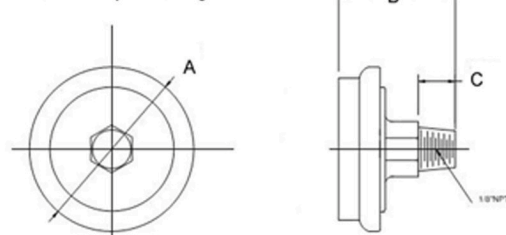
Specifications:

■ Dial	1"(25mm), 1.15"(30mm), 1.25"(32mm), 1.5"(40mm)
■ Case	1"(25mm) Nickel plated brass / others stainless steel
■ Lens	Polycarbonate
■ Spiral Tube	Brass / Beryllium copper / stainless steel
■ Socket	Brass / Stainless steel
■ Connection	1/8" NPT
■ Range	0-60 PSI -- 0-5000 PSI
■ Accuracy	±3-2-3%

1" Spiral Tube, Hex Case Type Gauge



Stainless Steel Case Spiral Tube Gauge



Spiral Tube Gauge

Dial	A	B	C
1" (25mm)	0.98" (24.95mm)	0.21" (20.87mm)	0.228" (5.8mm)
1.125" (30mm)	1.38" (35mm)	1.043" (26.5mm)	0.335" (8.5mm)
1.25" (32mm)	1.49" (37.8mm)	1.05" (26.7mm)	0.37" (9.4mm)
1.5" (40.0mm)	1.59" (40.40mm)	1.055" (26.80mm)	0.335" (8.5mm)