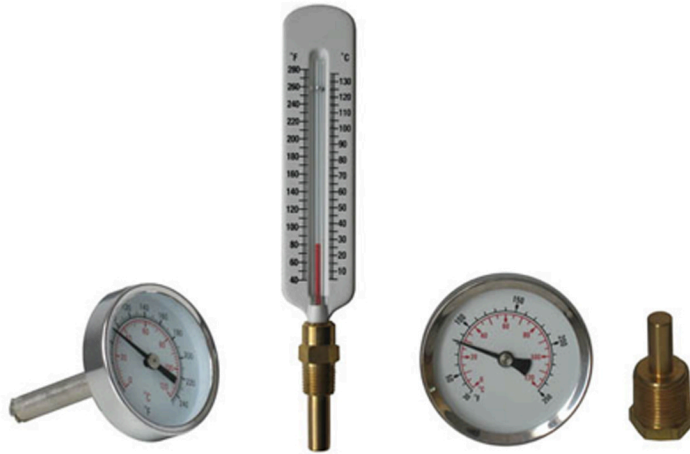


Applications:

An accurate way to measure air or water temperatures. Used in hot water lines, boilers and hydronic heating.

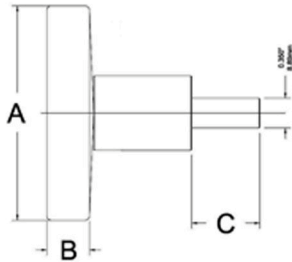


Specifications:

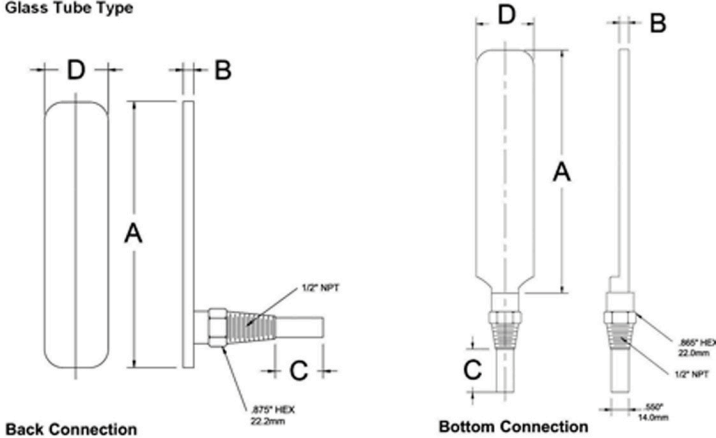
Hot Water Thermometer	
■ Dial	8"(200mm)
■ Case	Steel painted white with black marking
■ Liquid Filling	Kerosene, Red
■ Range	40-280F & 5-135C
■ Tube	Glass
■ Stem	Brass
■ Connection	1/2" NPT, Straight and Angle available
■ Accuracy	±1.0%

Hot Water Bimetal Thermometer	
■ Dial	2.5" (63mm)
■ Case	Zinc plated
■ Ring	Chrome plated steel
■ Len	Glass
■ Element	Bi-metal
■ Stem	Brass
■ Socket	Brass, 1/2"NPT, Separable
■ Range	30-250F & 0-120C
■ Recalibrator	Available
■ Accuracy	±2.0%

Bimetal Type



Glass Tube Type



Dial	A	B	C	D
2.5" (63mm)	2.515" (63.88mm)	0.500" (12.7mm)	0.800" (20.32mm)	
8" BACK (200mm)	7.500" (190.4mm)	0.365" (9.26mm)	1.350" (34.3mm)	1.80" (45.7mm)
8" BTM (200mm)	7.625" (193.5mm)	0.365" (9.26mm)	1.350" (34.3mm)	1.80" (45.7mm)