

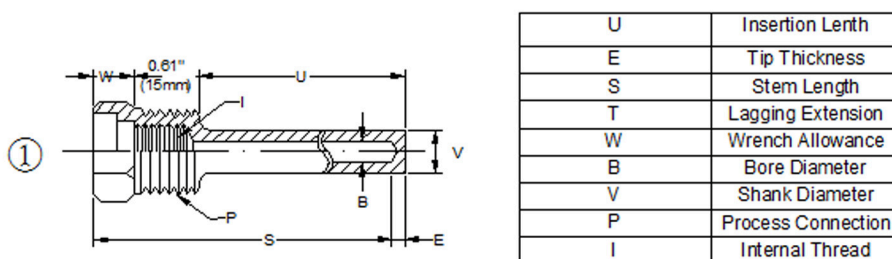
Applications:

To set up a "sealed system", whereby the thermometer can be removed from the application. To protect the thermometer from possible exposure to the media.

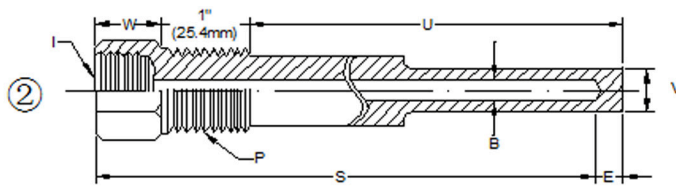


Specifications:

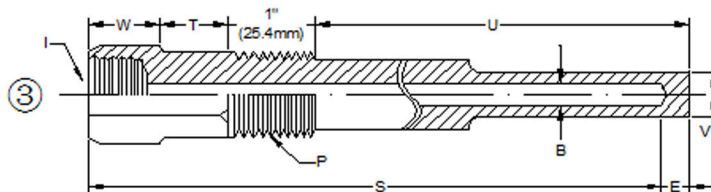
■	Material	Brass, Carbon Steel, 304 Stainless steel or 316 stainless steel
■	Thermometer connection	1/2"NPT female connection standard, other thread size are available upon request
■	Process Connection	3/4", 1/2", 1" or other threads size are available
■	Bore	0.260"(6.5mm) bore standard
■	Construction	Stepped construction standard, Tapered construction available upon request.



Stem	W	U	S	E	V	B	I	P
2.5"	0.40" (10.16mm)	1.75" (44.45mm)	2.5" (63.50mm)	0.26" (6.60mm)	0.44" (11.18mm)	0.26" (6.60mm)	1/2" NPSM	3/4" NPT



With Lag



Stem	W	U	U(With Lag)	S	E	V	B	T	I	P
4"	0.75" (19.05mm)	2.50" (63.5mm)	1.90" (48.26mm)	4" (101.60mm)	0.25" (6.35mm)	0.5" (12.70mm)	0.26" (6.60mm)	0.6" (15.24mm)	1/2" NPSM	3/4" NPT
6"	0.75" (19.05mm)	4.50" (114.30mm)	2.50" (63.50mm)	6" (152.40mm)	0.25" (6.35mm)	0.5" (12.70mm)	0.26" (6.60mm)	2" (50.80mm)	1/2" NPSM	3/4" NPT
9"	0.75" (19.05mm)	7.50" (190.50mm)	4.50" (114.30mm)	9" (228.60mm)	0.25" (6.35mm)	0.5" (12.70mm)	0.26" (6.60mm)	3" (76.20mm)	1/2" NPSM	3/4" NPT
12"	0.75" (19.05mm)	10.50" (266.70mm)	7.50" (190.50mm)	12" (304.80mm)	0.25" (6.35mm)	0.5" (12.70mm)	0.26" (6.60mm)	3" (76.20mm)	1/2" NPSM	3/4" NPT
15"	0.75" (19.05mm)	13.50" (342.9mm)	10.50" (266.70mm)	15" (381.00mm)	0.25" (6.35mm)	0.5" (12.70mm)	0.26" (6.60mm)	3" (76.20mm)	1/2" NPSM	3/4" NPT
18"	0.75" (19.05mm)	16.50" (419.1mm)	13.50" (342.9mm)	18" (457.20mm)	0.25" (6.35mm)	0.5" (12.70mm)	0.26" (6.60mm)	3" (76.20mm)	1/2" NPSM	3/4" NPT
24"	0.75" (19.05mm)	22.50" (571.5mm)	19.50" (495.30mm)	24" (609.60mm)	0.25" (6.35mm)	0.5" (12.70mm)	0.26" (6.60mm)	3" (76.20mm)	1/2" NPSM	3/4" NPT