

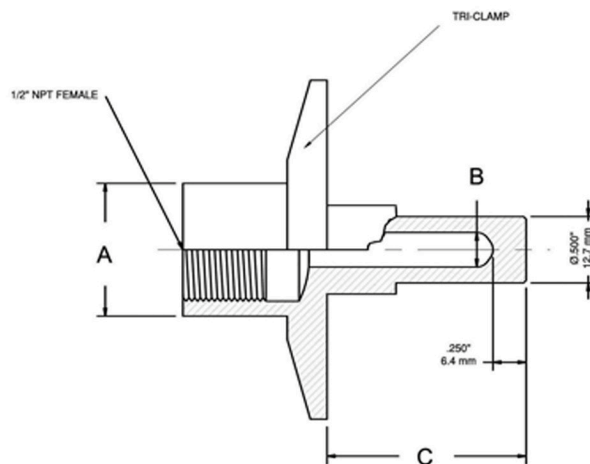
## Applications:

To set up a "sealed system", whereby the thermometer can be removed from the application. To protect the thermometer from possible exposure to the media. Designed specifically for sanitary requirements of the food and dairy industry.



## Specifications:

■	Material	316 stainless steel
■	Thermometer connection	1/2" NPT
■	Connection	1.5", 2", 2.5" & 3" Tri-Clamp
■	Bore	0.260" (6.5mm) bore standard
■	Stem	Lengths of stem are available upon request



Tri-Clamp Conn.	A	B	C	Material
1.5" (50.5mm)	1.000" (25.4mm)	0.260" (6.6mm)	per request	316 SS
2" (64mm)	1.000" (25.4mm)	0.260" (6.6mm)	per request	
2.5" (77.5mm)	1.000" (25.4mm)	0.260" (6.6mm)	per request	
3" (91mm)	1.000" (25.4mm)	0.260" (6.6mm)	per request	