

## Applications:

Where the process fluid is corrosive or viscous and would clog instrument internals within the pressure gauge, switch or transmitter. Easy removal of gauge or switch for calibration, repair or replacement without interrupting process flow.



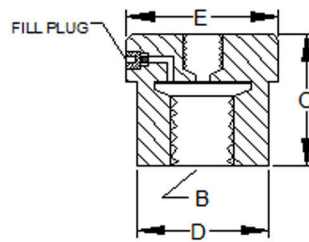
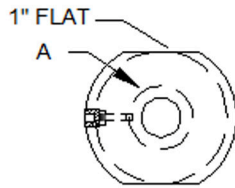
## Specifications:

■	Housing	AISI 316 stainless steel
■	Diaphragm	AISI 316 stainless steel, welded
■	Process Connection	1", 3/4", 1/2", 1/4" or other threads size are available
■	Process Temperature	-22F to 212F (-30C to 100C)
■	Option	Other materials such as Teflon, PVC, Carbon steel, Titanium are available upon request.

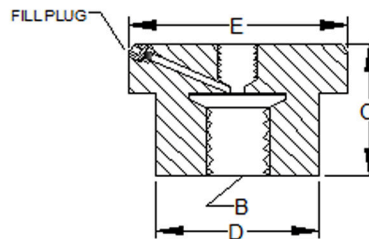
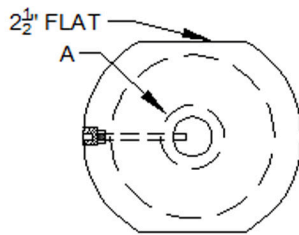
## D40,D60,D60L,DIAPHRAGM SEALS

A INSTRUMENT CONNECTION	B INSTRUMENT CONNECTION	C	D	E
		D40		
1/4 in nptf	1/4 in nptf 1/2 in nptf	1.5 in (38.1mm)	1.5 in (38.1mm)	1.73 in (43.9mm)
1/2 in nptf	1/2 in nptf 3/4 in nptf			
		D60 D60L		
1/4 in nptf	1/4 in nptf 1/2 in nptf 1 in nptf	1.5 in (38.1mm)	1.86 in (47.2mm)	2.5 in (63mm)
1/2 in nptf	1/2 in nptf 1 in nptf			

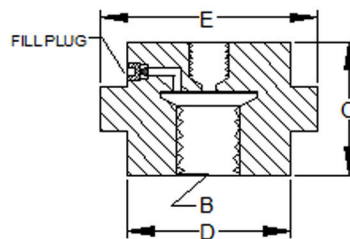
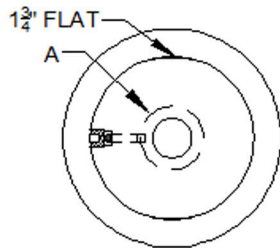
Illustrated Model: D40



Illustrated Model: D60



Illustrated Model: D60L



## D70 DIAPHRAGM SEALS

Process Temperature: -49°F to 302°F (-45°C to 150°C).

Upper Housing Options: 316SS, Carbon Steel, Monel, Hastalloy C.

Lower Housing Options: 316SS, Carbon Steel, Monel, Hastalloy C.

Diaphragm Options: 316SS, PTFE (Teflon) coated 316SS, Monel, Hastalloy C, Viton.

Operating Pressure: 30" Hg Vac to 2500 psi (-100 to 15580 kPa).

Bolts and Nuts: 304SS.

Gasket: PTFE.

